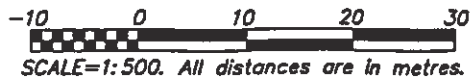


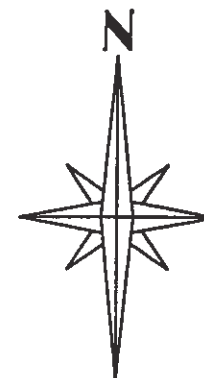
SUBDIVISION PLAN OF LOT A, SECTION 16. VICTORIA DISTRICT, PLAN 12407.

PLAN



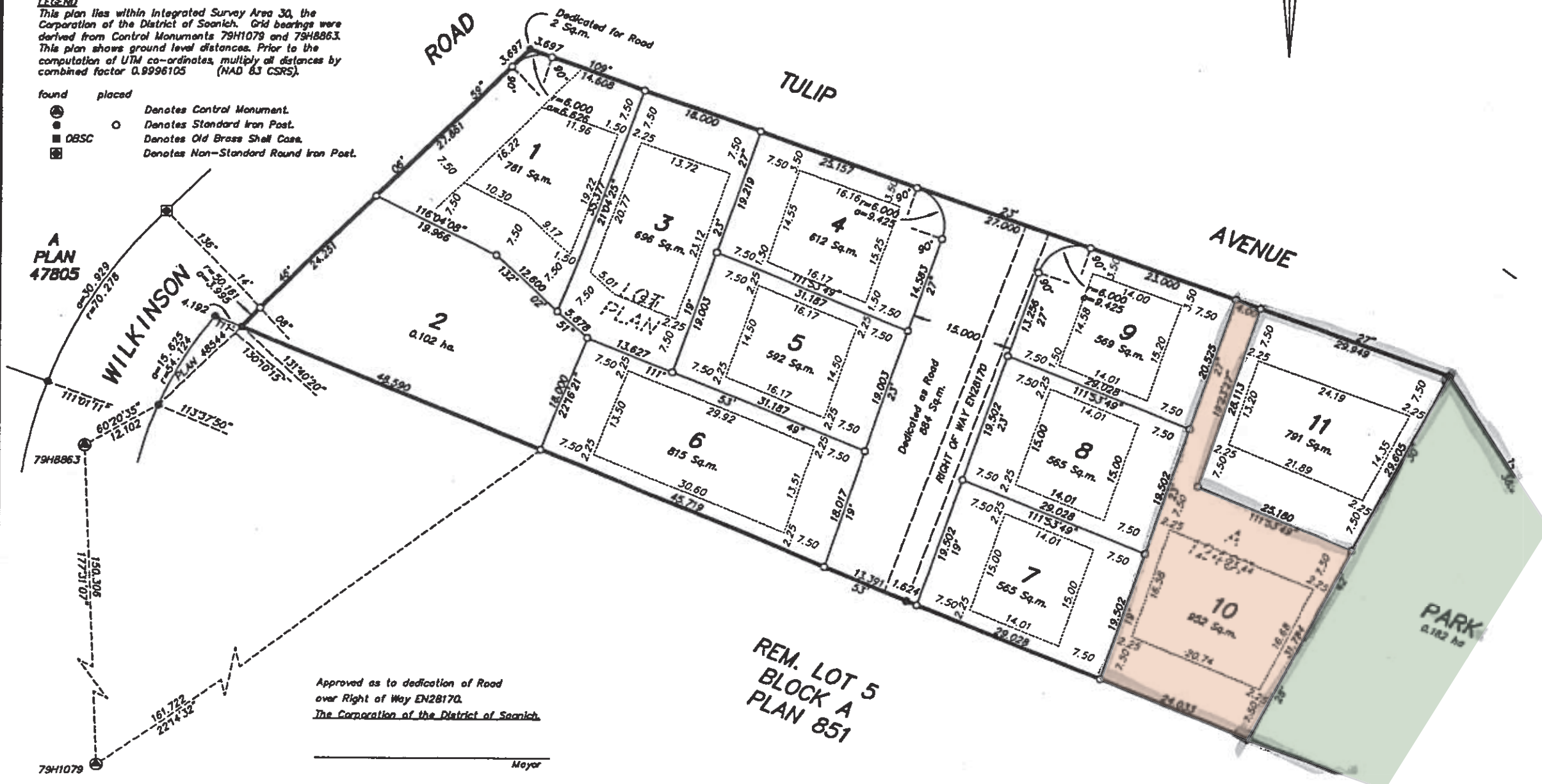
BCGS 92B.043

NOTE: Building envelopes must be confirmed by Soanich prior to reliance. Subdivision Plan is NOT registered, dimensions may vary.



LEGEND
This plan lies within Integrated Survey Area 30, the Corporation of the District of Soanich. Grid bearings were derived from Control Monuments 79H1079 and 79H8863. This plan shows ground level distances. Prior to the computation of UTM co-ordinates, multiply all distances by combined factor 0.9996105 (NAD 83 CSRS).

- | | | |
|-------|--------|---------------------------------------|
| found | placed | |
| ● | ○ | Denotes Control Monument. |
| ○ | ○ | Denotes Standard Iron Post. |
| ■ | ○ | Denotes Old Brass Shell Case. |
| ■ | ○ | Denotes Non-Standard Round Iron Post. |



Approved as to dedication of Road
over Right of Way EN28170.
The Corporation of the District of Soanich.

79H1079

Meyor